



Backup4all Monitor

Remote monitoring for your backups

Backup4all Monitor User Manual

Copyright © 2019 Softland

Backup4all Monitor User Manual

for Backup4all Monitor version 1

by Softland

This documentation contains proprietary information of Softland.

All rights reserved. No part of this documentation shall be reproduced, stored in a retrieval system or transmitted by any means, electronic, mechanical, photocopying, recoding, or otherwise, without permission from Softland. No patent liability is assumed with respect to the use of the information contained herein.

The information in this document is subject to change without notice. Although every precaution has been taken in the preparation of this book, Softland assumes no responsibility for errors and omissions. Nor is any liability assumed for damages resulting from the information contained herein.

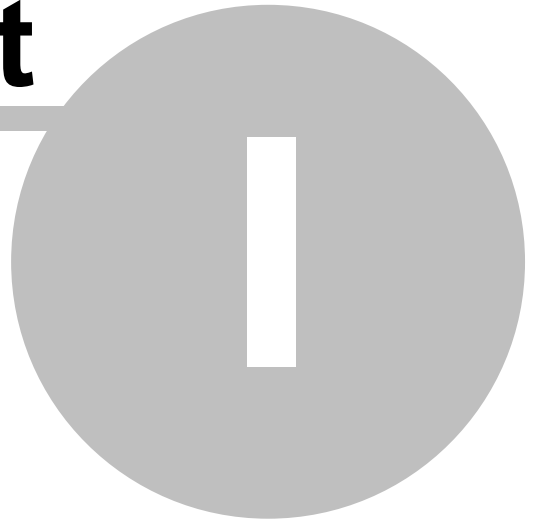
Windows ® is a registered trademark of the Microsoft Corporation. All other products or company names in this document are used for identification purposes only, and may be trademarks of their respective owners.

Table of Contents

Part I Application description	5
Part II Getting Started	7
1 How to install.....	7
2 How to configure.....	9
Part III Real-time	15
Part IV History	18
Part V Settings	21
1 Dashboard settings.....	21
2 Server settings.....	24
Part VI Logging	30
Index	0

Application description

Part



1 Application description

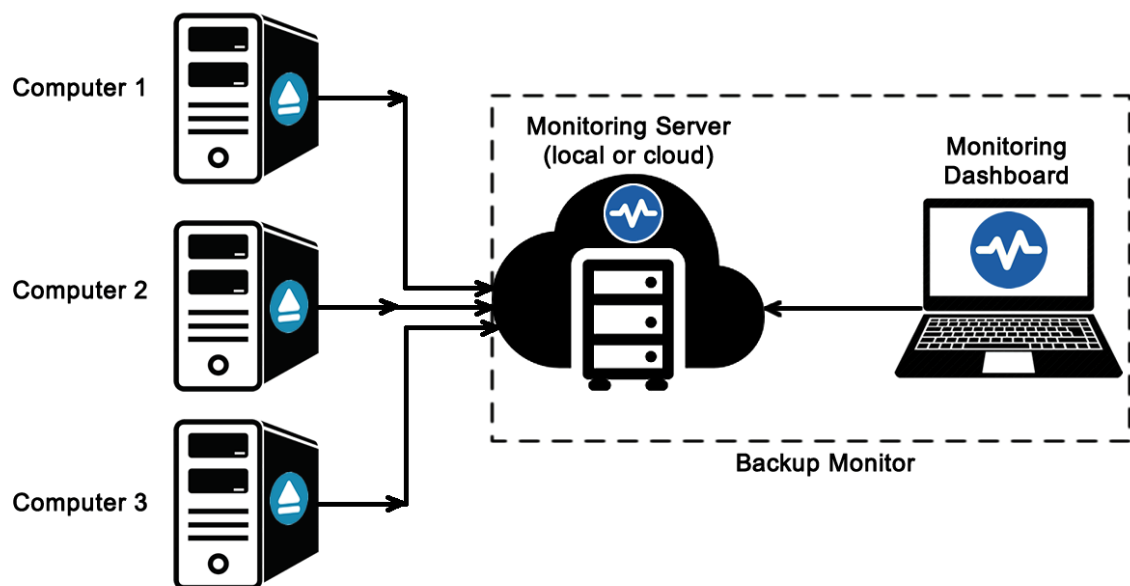
Backup4all Monitor is a desktop application that can be used to monitor the backup executions of any number of computers running Backup4all.

You can monitor in real time the following running actions: backup, test, restore, cleanup of the backup jobs and tags. You can also view the backup history and the logs for all your computers where Backup4all is configured to send reports to the Monitor Server.

There is no longer necessarily to connect to each computer where Backup4all is installed, in order to check the backup status, as you have all that information in a single place.

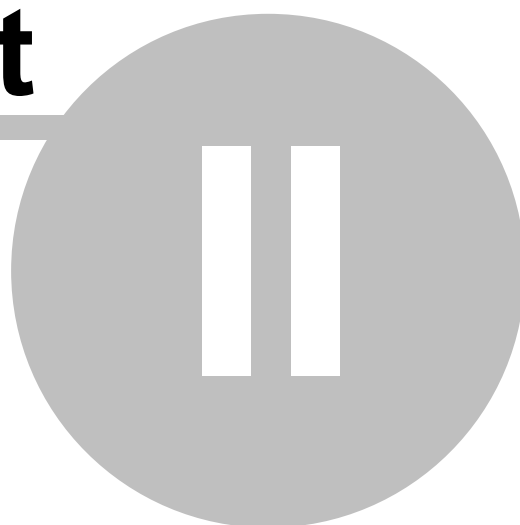
Backup4all Monitor has two parts: the Monitor Server and the Monitor Dashboard.

- The **Monitor Server** will be installed only on the server where the reports will be received
- The **Monitor Dashboard** will be installed with the server (at least to configure it) and it can also be installed individually on any computer you need to use when monitoring the backups.



Getting Started

Part



2 Getting Started

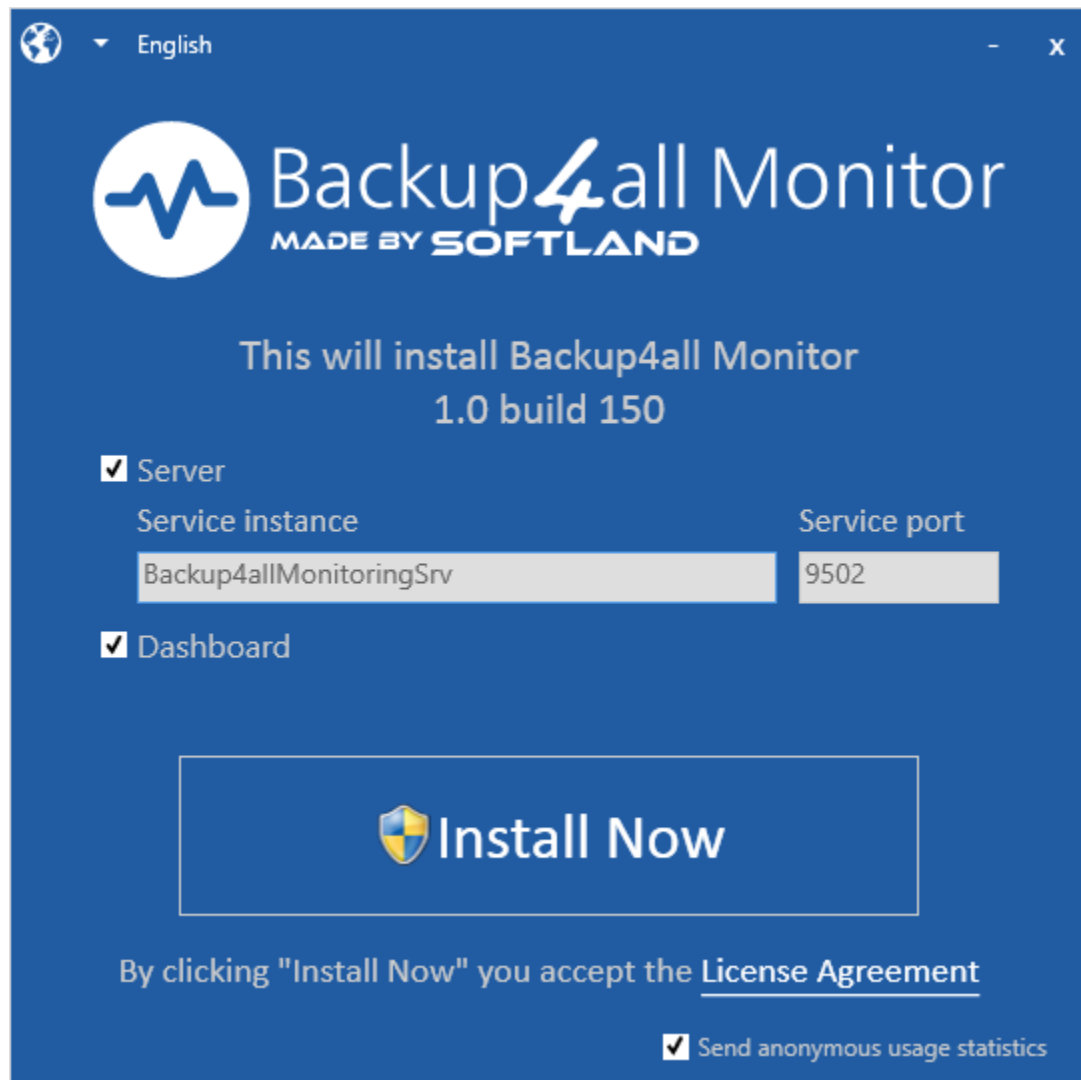
2.1 How to install

Running the Backup4all Monitor setup allows you to install the Monitor Server and/or the Monitor Dashboard. If you need to install only the Monitor Dashboard on another computer, you must check only the "Dashboard" option.

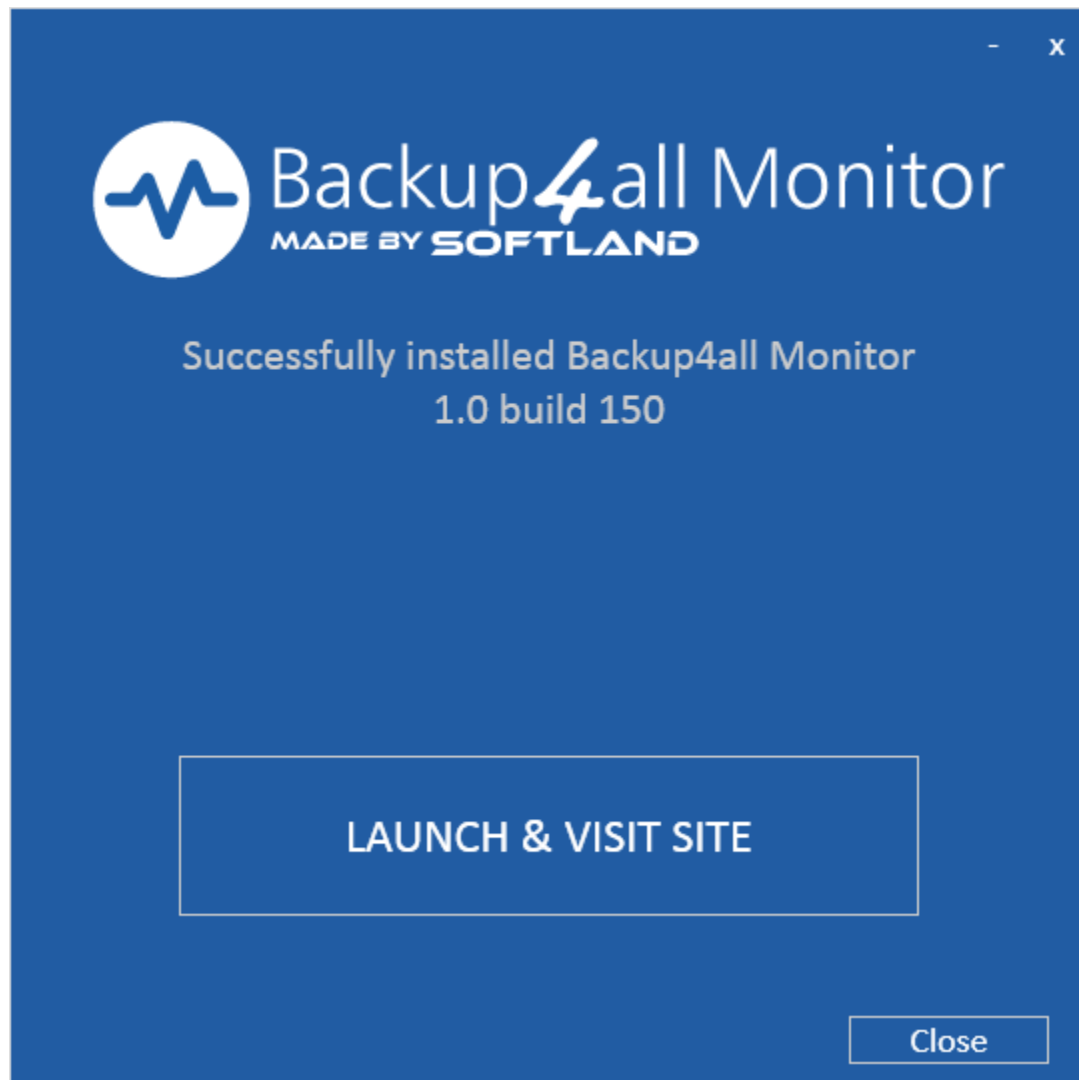
Requirements:

- Microsoft .NET Framework
- Windows Server 2019/Server 2016/10/Server 2012/8.1/8/Server 2008/7/Vista
- 100MB of free disk space

When running the setup, you must enter the Service instance and the Service port. Both are automatically filled by default. You can use the default values or you can enter your own instance name and port. Then you need to press "Install now" button to start the installation.



At the end, you will get a confirmation about the successful installation:



2.2 How to configure

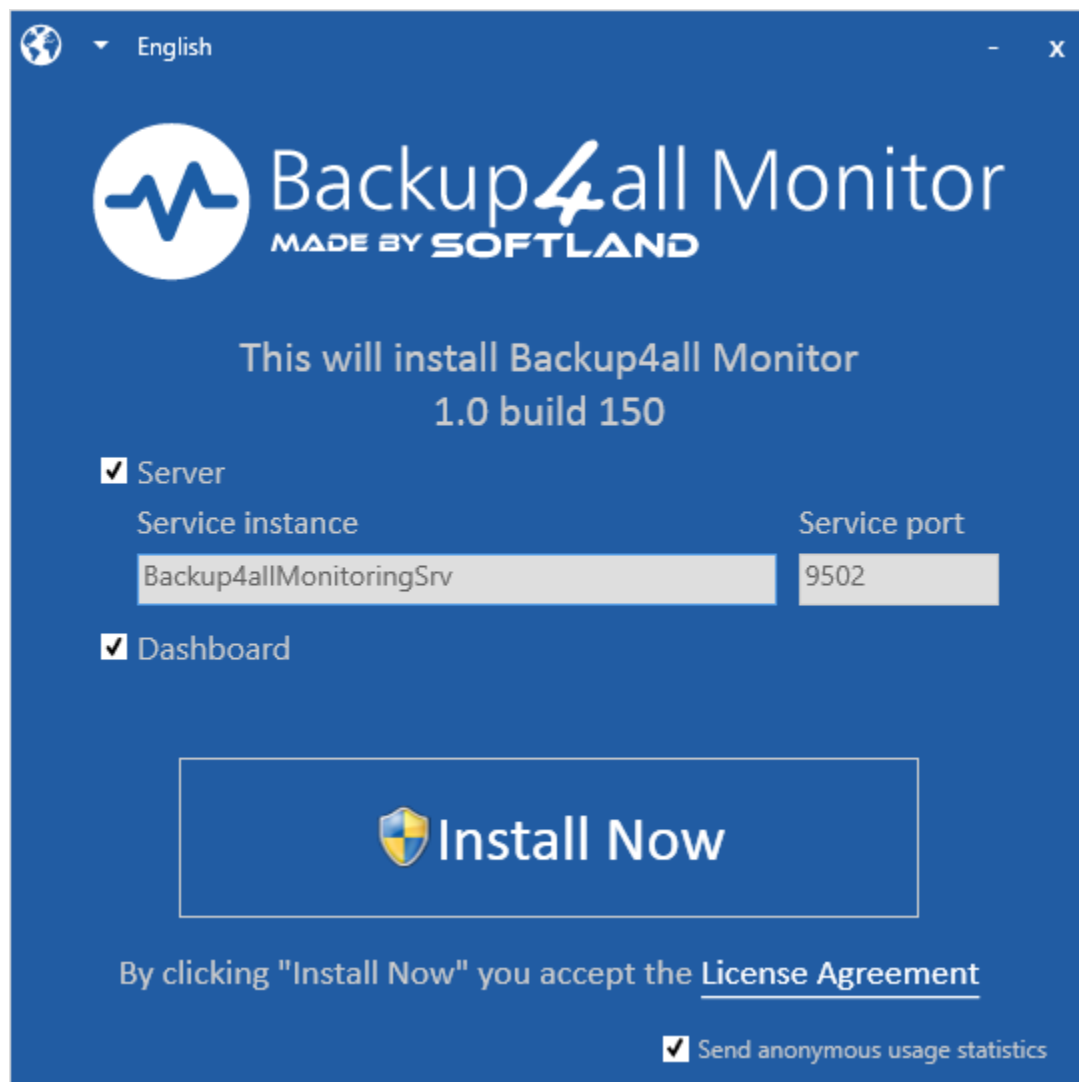
How to configure the Monitor Server

How to configure Backup4all

How to configure the Monitor Dashboard

How to configure the Monitor Server

The Monitor Server configurations are simple and will be made on installation. You only have to enter the Service Instance name and the port number.

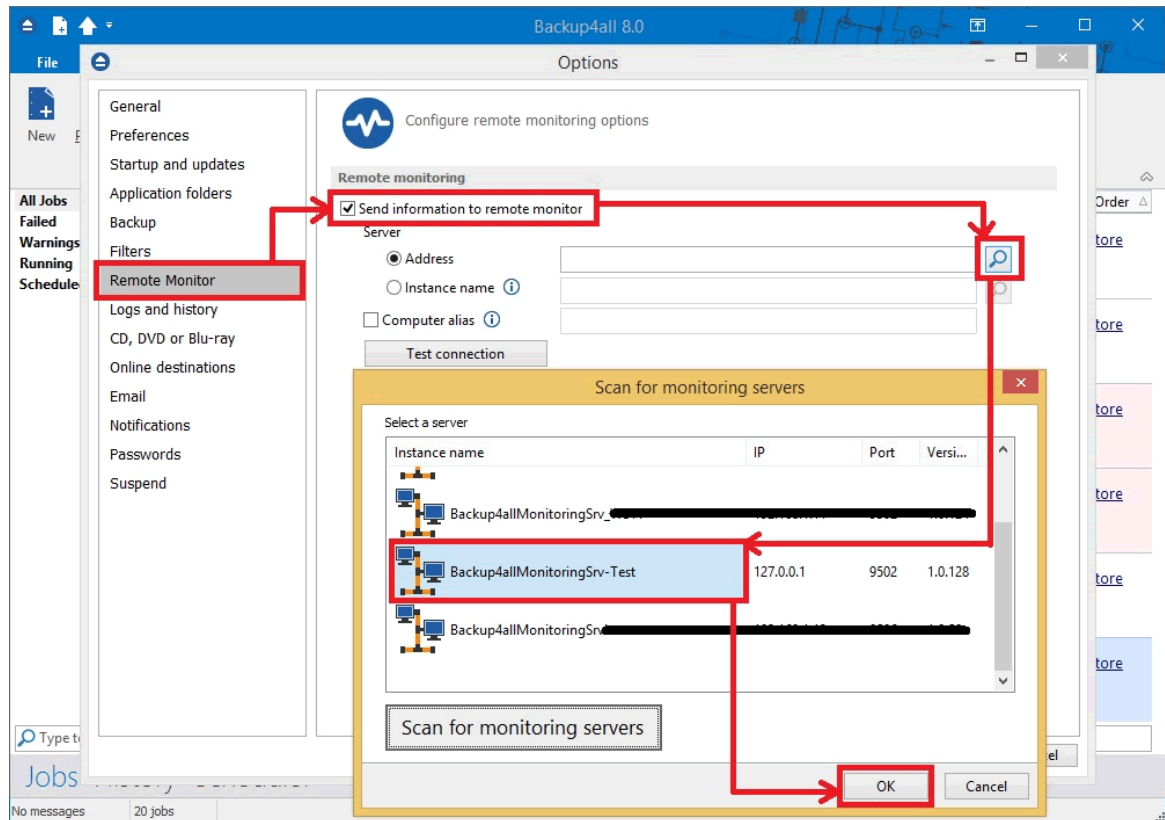


How to configure Backup4all

1. Open Backup4all
2. Go to **File->Options->Remote Monitor**
3. Enable the **“Send information to remote monitor”** option.
4. Press the search icon from the Address field, to open **“Scan for monitoring servers”** window.
5. Select the Instance name for the monitor you want to send backup information to, then press **OK**.
6. In the Address field you can also manually enter the monitoring server’s IP followed by the port number and Instance name (example `http://127.0.0.1:9502/Backup4allMonitoringSrv-Test`)
7. If the monitoring server is located in your network, you can use the **“Instance name”** field, where you must enter the name of the Instance for the monitoring server, or press the search button to scan the network. (example: `Backup4allMonitoringSrv-Test`)
8. If you want to assign an alias for that computer, you can select the **“Computer alias”** option

and type a name.

9. When the remote monitor is selected, you can press the **“Test connection”** button and press OK.

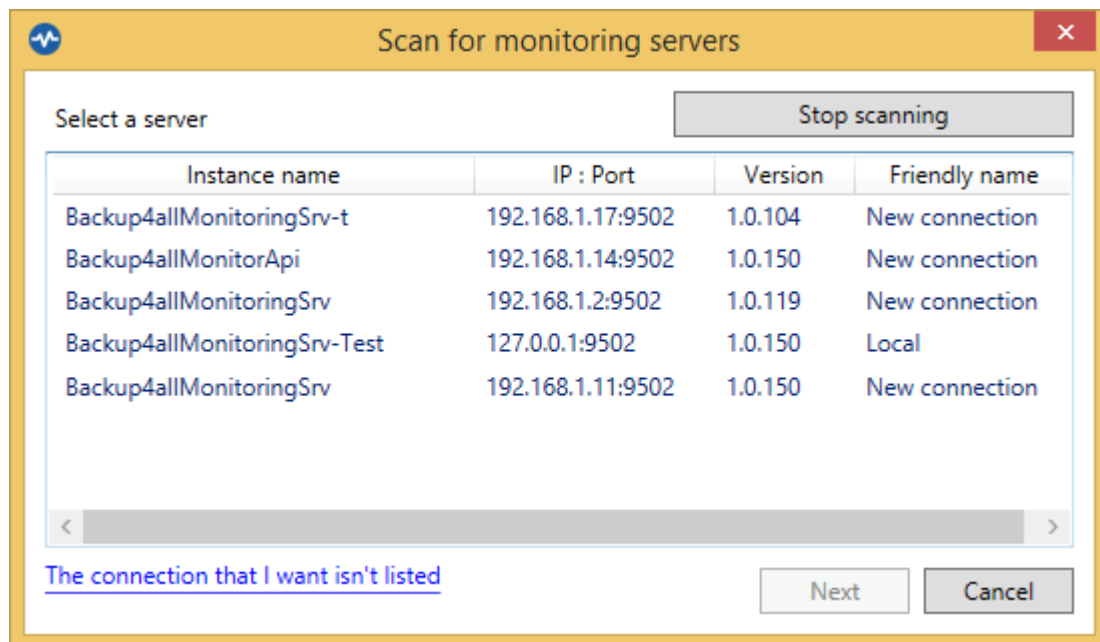


How to configure the Monitor Dashboard

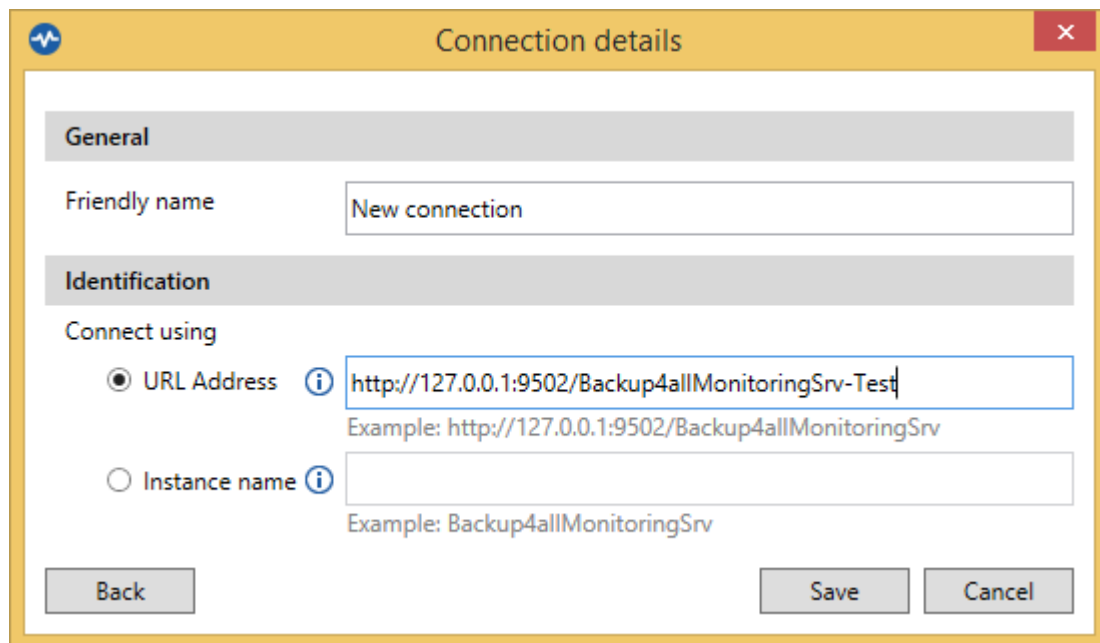
There are two possible cases when you configure the **Monitor Dashboard**:

- on the same computer where Backup4all Monitor was installed. In this case, Dashboard will automatically detect the server.
- on a different computer than the one where Backup4all Monitor is installed. In this case, the following steps are necessarily.

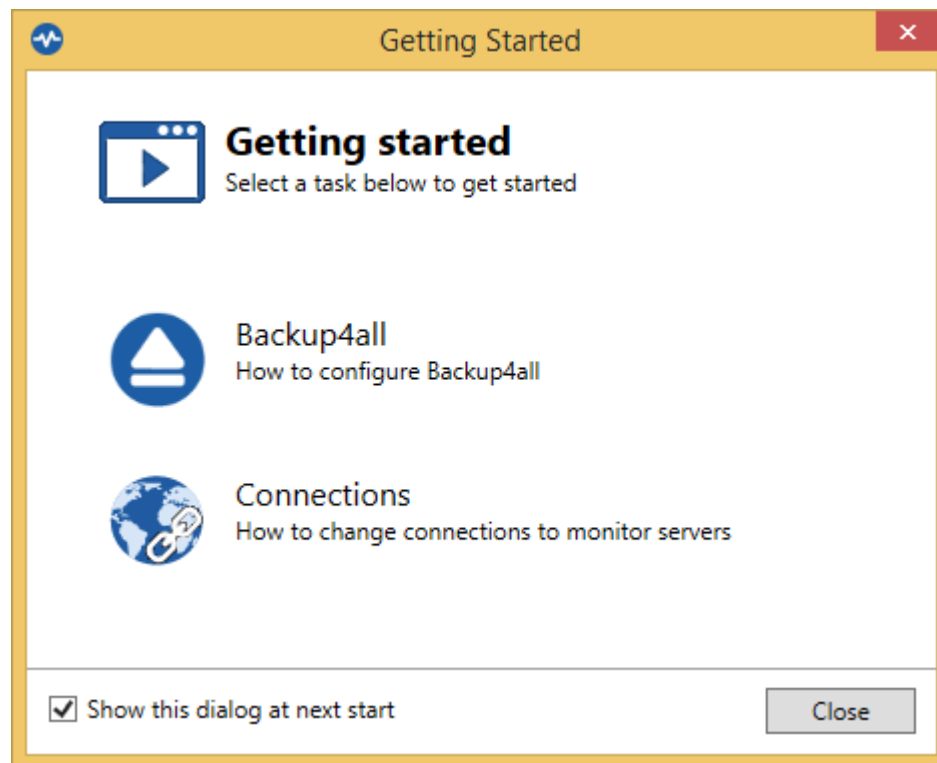
1. After installing the Dashboard, on the first execution, the **“Scan for monitoring servers”** window will appear.
2. There you can select one of the servers listed (from your network) or you can enter a new one by pressing the **“The connection that I want isn’t listed”** link.



3. In order to manually enter the details for a new connection, you can enter the IP, port number and instance name. If the server is located in the same network, you can simply use only the Instance name. Then press **Save** button.

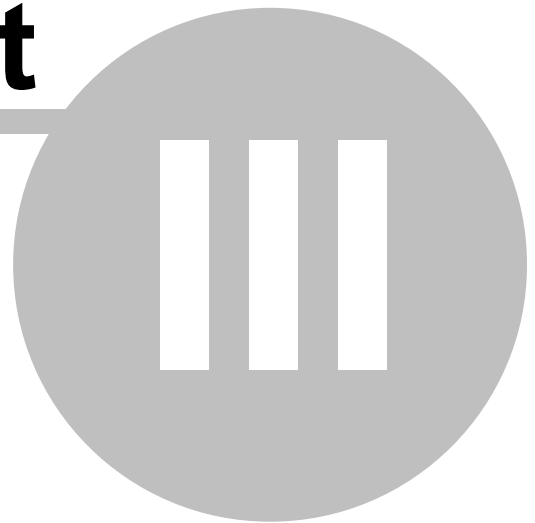


4. After that, the “**Getting started**” window will be shown.



Real-time

Part



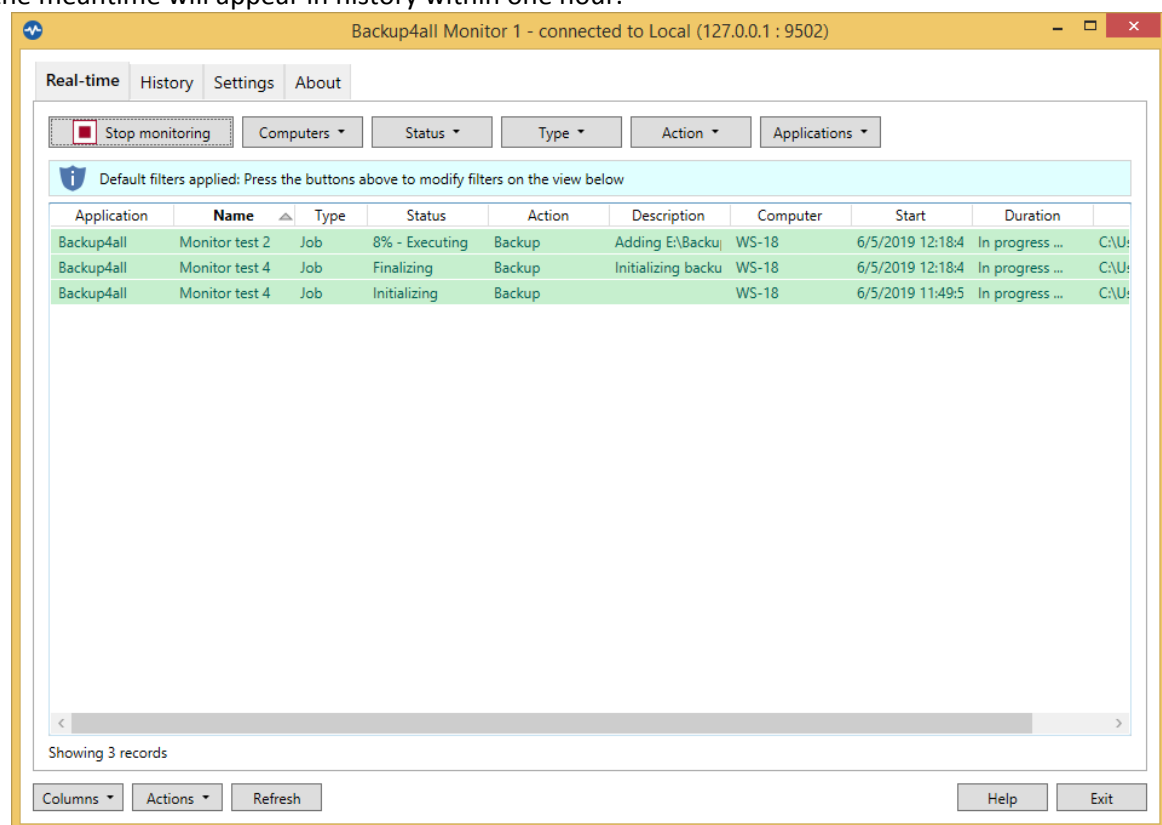
3 Real-time

Backup4all Monitor has a **Real-time** tab where you can see all backup/test/clean/restore actions in progress.

On both tabs, you can filter the entries in order to see the exact information you need and you can order the entries by different columns.

You can select which columns to display or hide.

The first button allows you to "Stop monitoring" (or "Start monitoring"). As long as the monitoring is stopped, no more actions will be received. When starting the monitoring again, all actions executed in the meantime will appear in history within one hour.



You can use the following filters:

- Computer
- Status
 - Initializing
 - Preparing
 - Executing
 - Finalizing
 - Waiting
 - Paused
 - Success

- Error
- Warning
- Unknown
- Type
 - Job
 - Tag
- Action
 - Backup
 - Test
 - Restore
 - Cleanup
 - Statistics
- Applications

History

Part



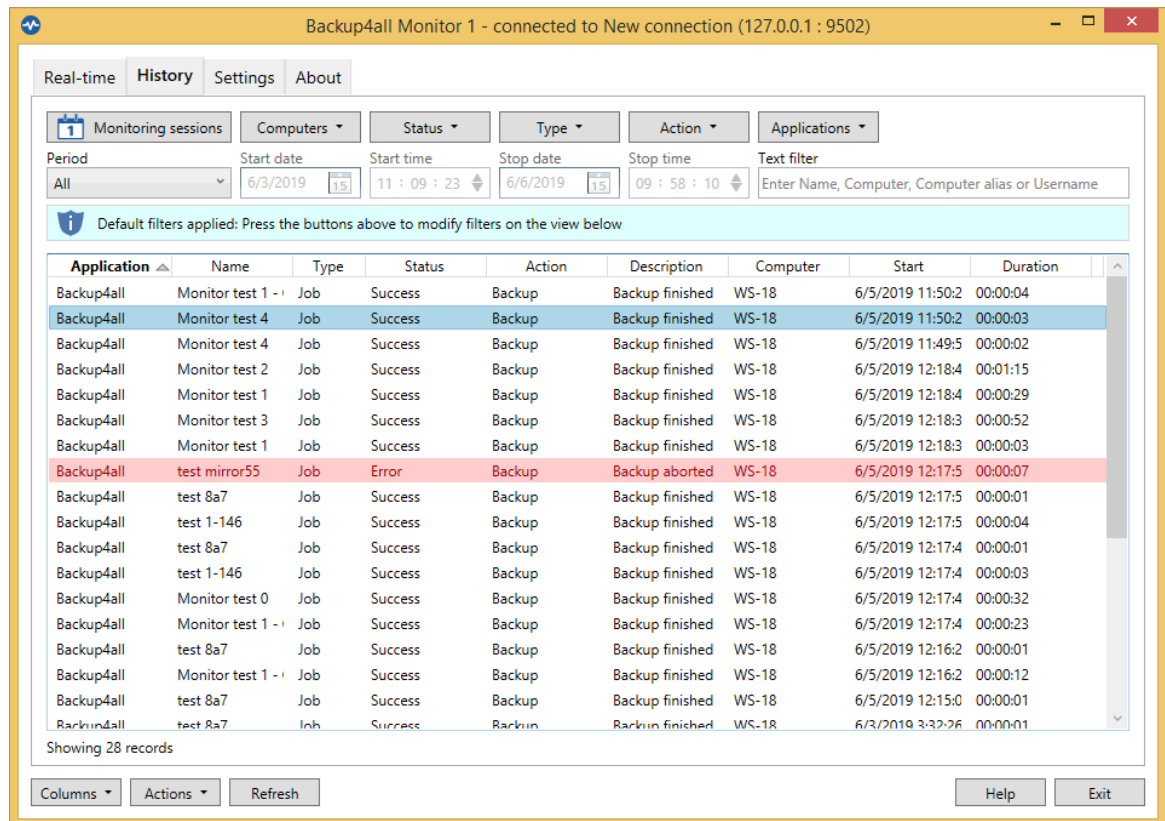
IV

4 History

The **History** tab of Backup4all Monitor will display all finished actions from the Monitor Server.

On this tabs, you can filter the entries in order to see the exact information you need and you can order the entries by different columns.

You can select which columns to display or hide.



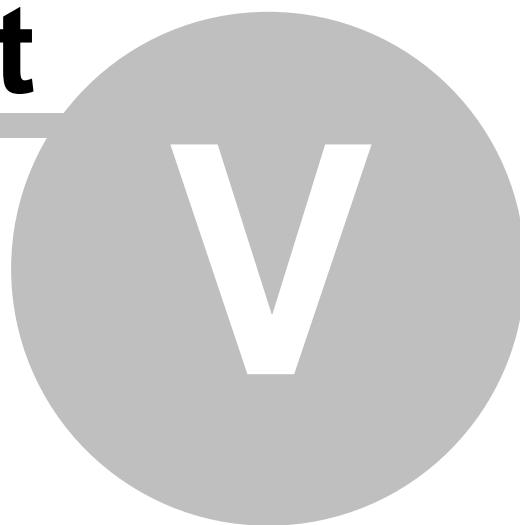
You can use the following filters:

- Computer
- Status
 - Initializing
 - Preparing
 - Executing
 - Finalizing
 - Waiting
 - Paused
 - Success
 - Error
 - Warning
 - Unknown
- Type

- Job
- Tag
- Action
 - Backup
 - Test
 - Restore
 - Cleanup
 - Statistics
- Applications

Settings

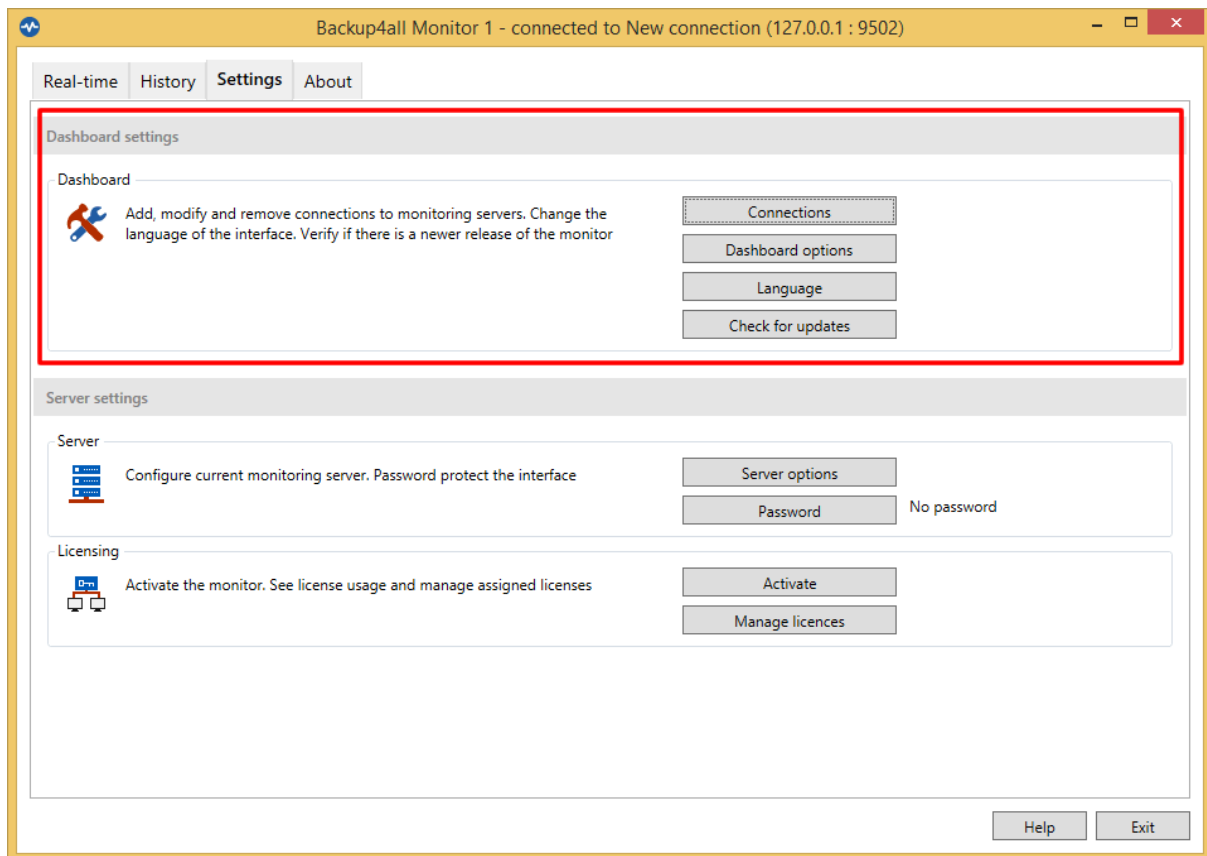
Part



5 Settings

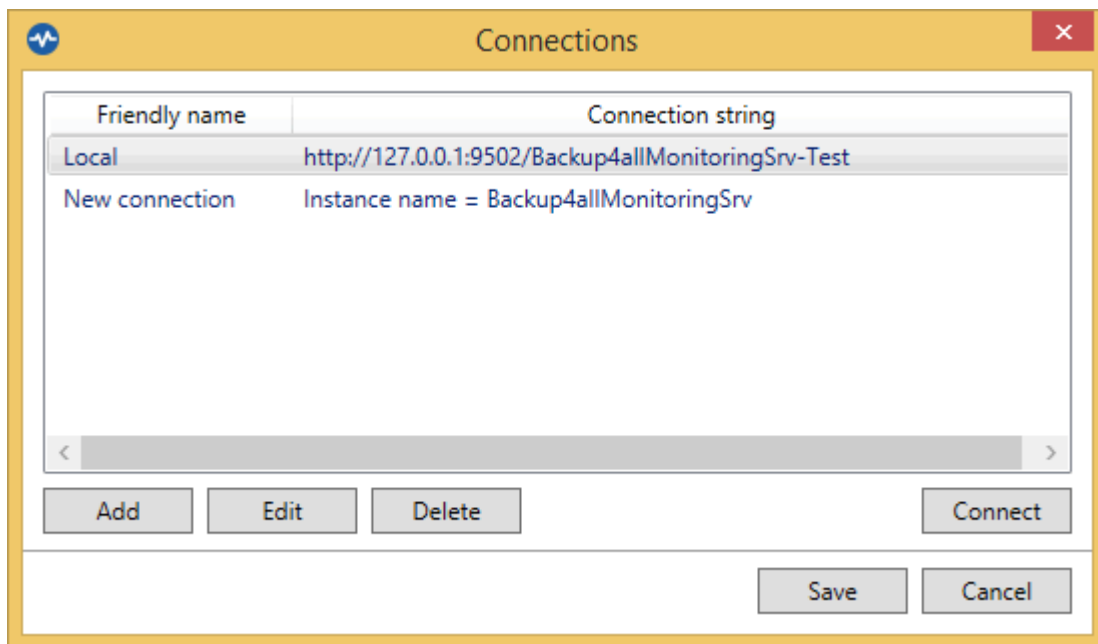
5.1 Dashboard settings

On the **Settings** tab of the Monitor Dashboard, under **Dashboard settings** area, you can perform different configuration changes applying to the current Monitor Dashboard.

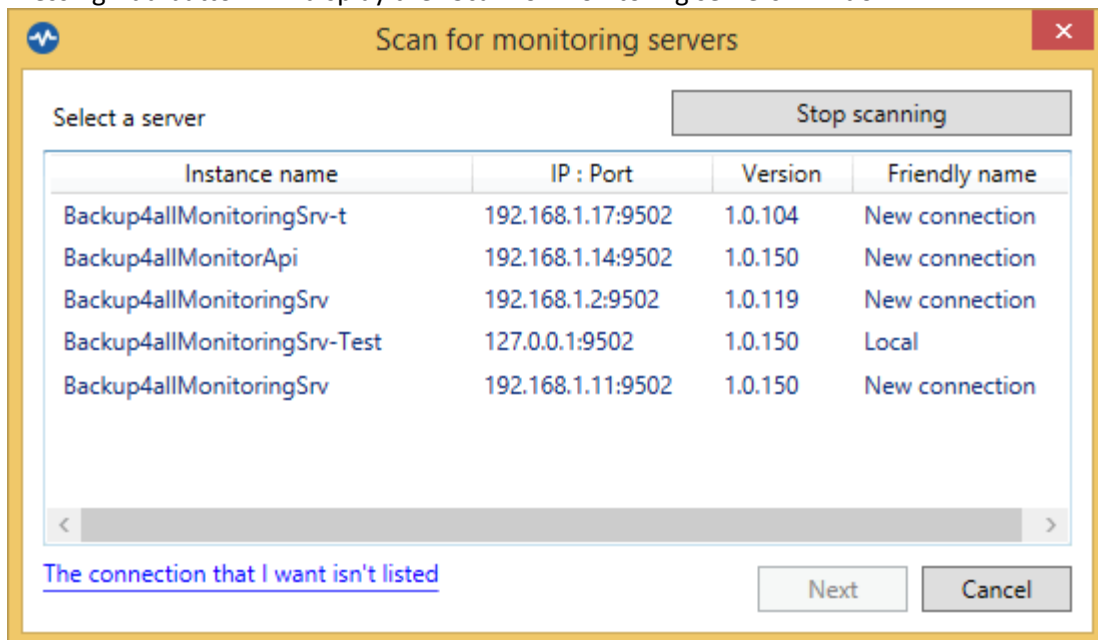


Connections

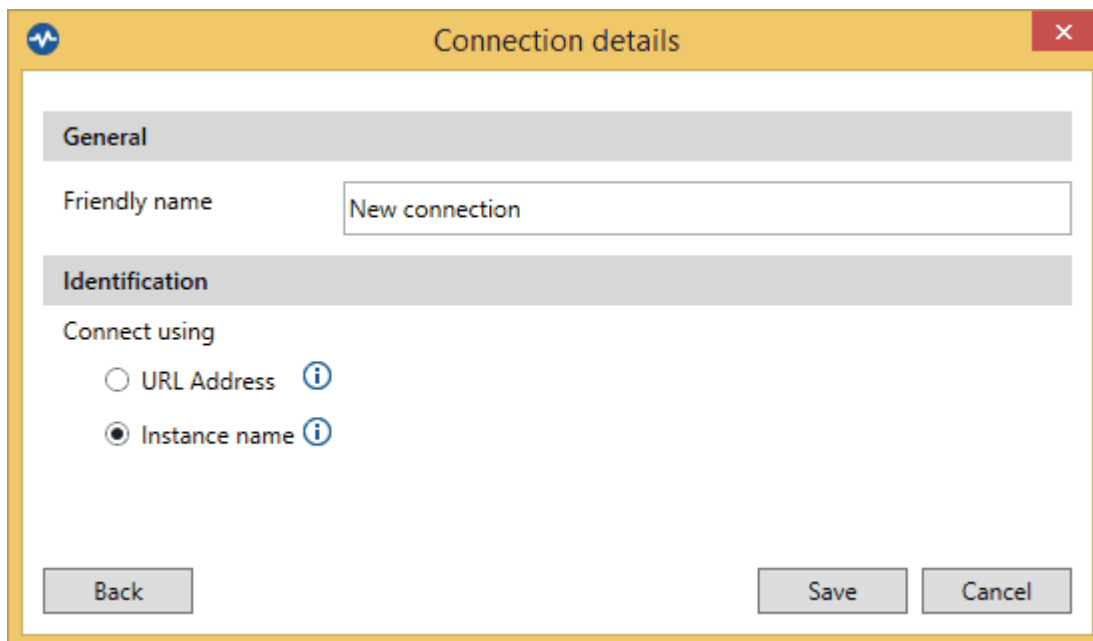
In this window you can manage (add, edit, delete) the connections to multiple Monitor Servers. When switching to another Monitor Server, just select it and press the Connect button.



Pressing Add button will display the "Scan for monitoring servers" window



Select a server and press Next to set the connection identification details, based on **URL Address** or **Instance name**. When finished, press the **Save** button



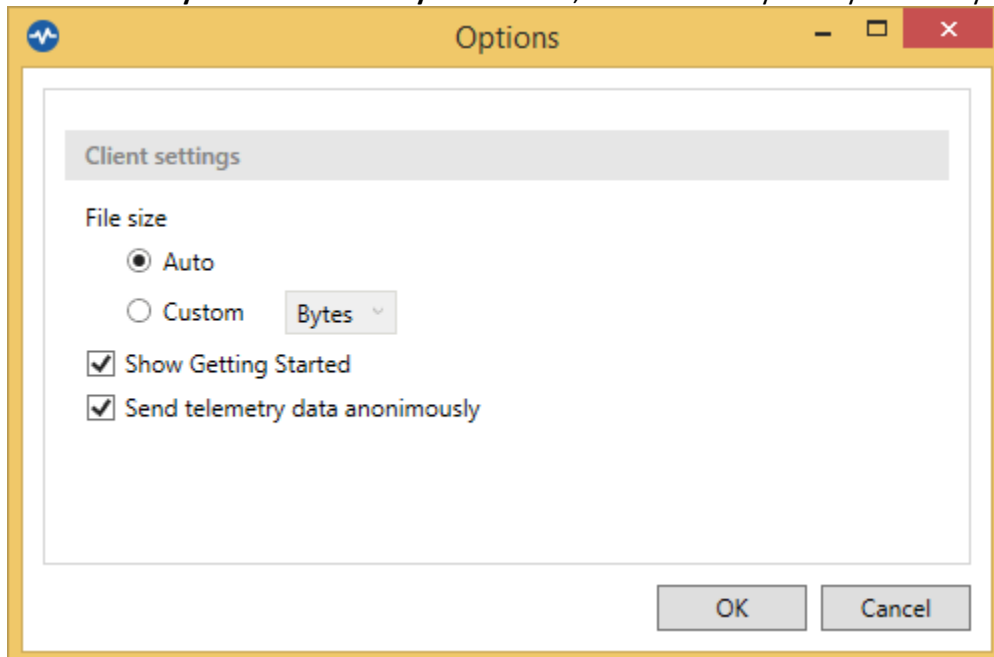
The 'Connection details' dialog box has a yellow title bar with a blue icon on the left and a red close button on the right. It contains two sections: 'General' and 'Identification'. The 'General' section has a 'Friendly name' text box with the value 'New connection'. The 'Identification' section has a 'Connect using' label and two radio buttons: 'URL Address' (unselected) and 'Instance name' (selected). Both radio buttons have an information icon to their right. At the bottom, there are three buttons: 'Back', 'Save', and 'Cancel'.

Dashboard Options

In this window, you can set the file size displaying unit measure.

Getting Started - if checked, will display the getting started popup at application startup.

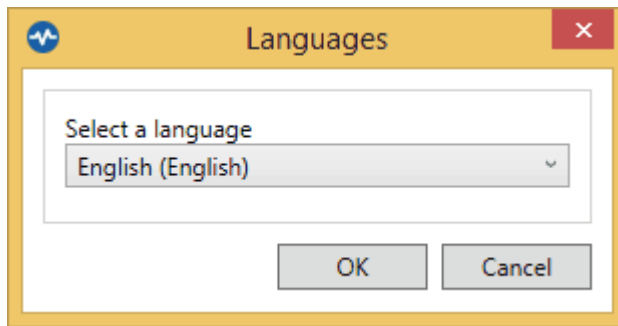
Send telemetry data anonymously - if selected, will send anonymously telemetry information.



The 'Options' dialog box has a yellow title bar with a blue icon on the left and standard window controls on the right. It contains a 'Client settings' section with the following options: 'File size' with 'Auto' selected and 'Custom' unselected; a 'Bytes' dropdown menu; 'Show Getting Started' checked; and 'Send telemetry data anonymously' checked. At the bottom, there are 'OK' and 'Cancel' buttons.

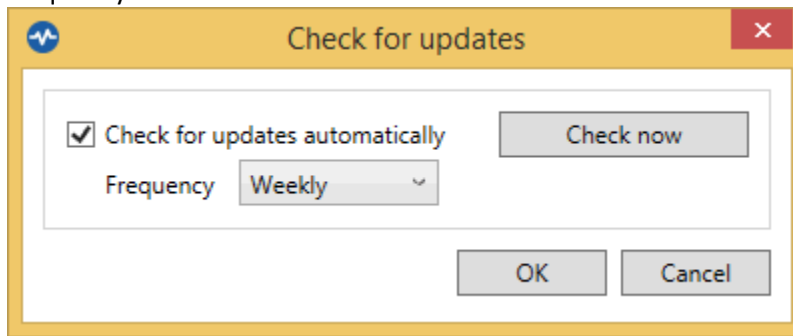
Language

Select the Dashboard interface language



Check for updates

Here you can enable/disable the automatic check for updates and you can also set the check frequency.

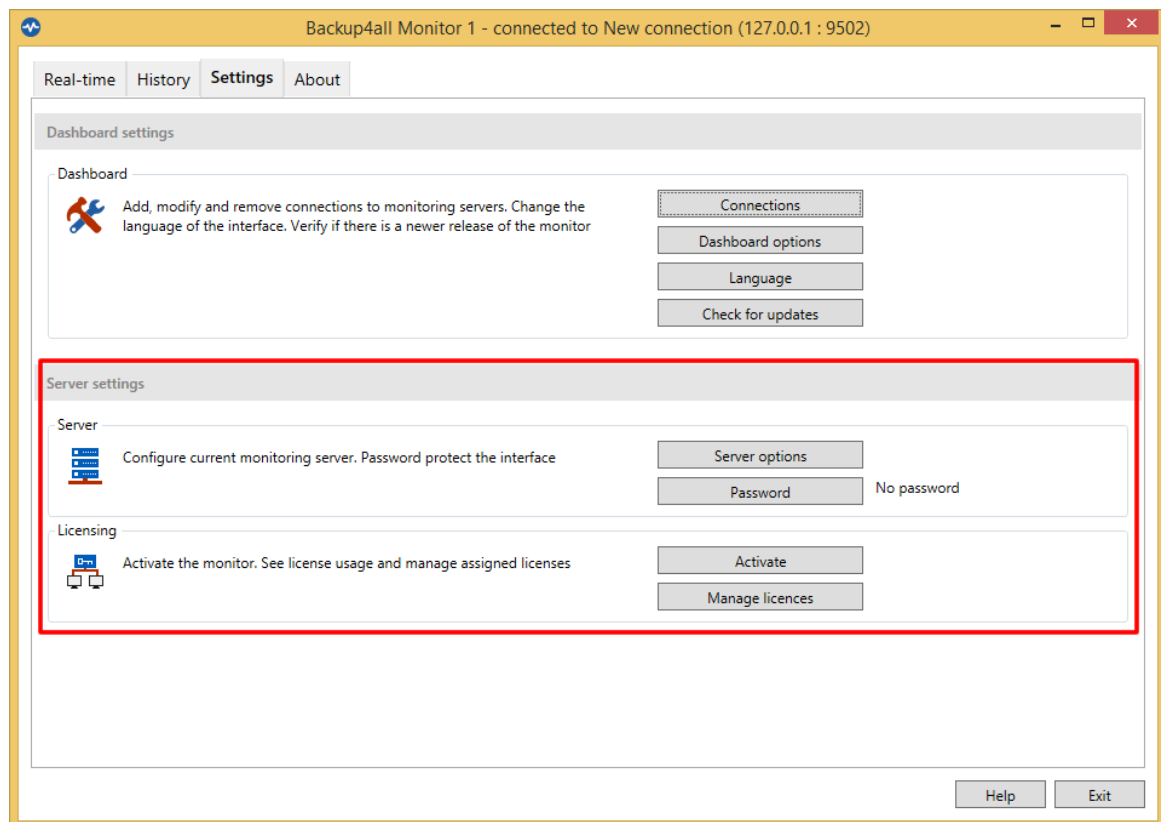


5.2 Server settings

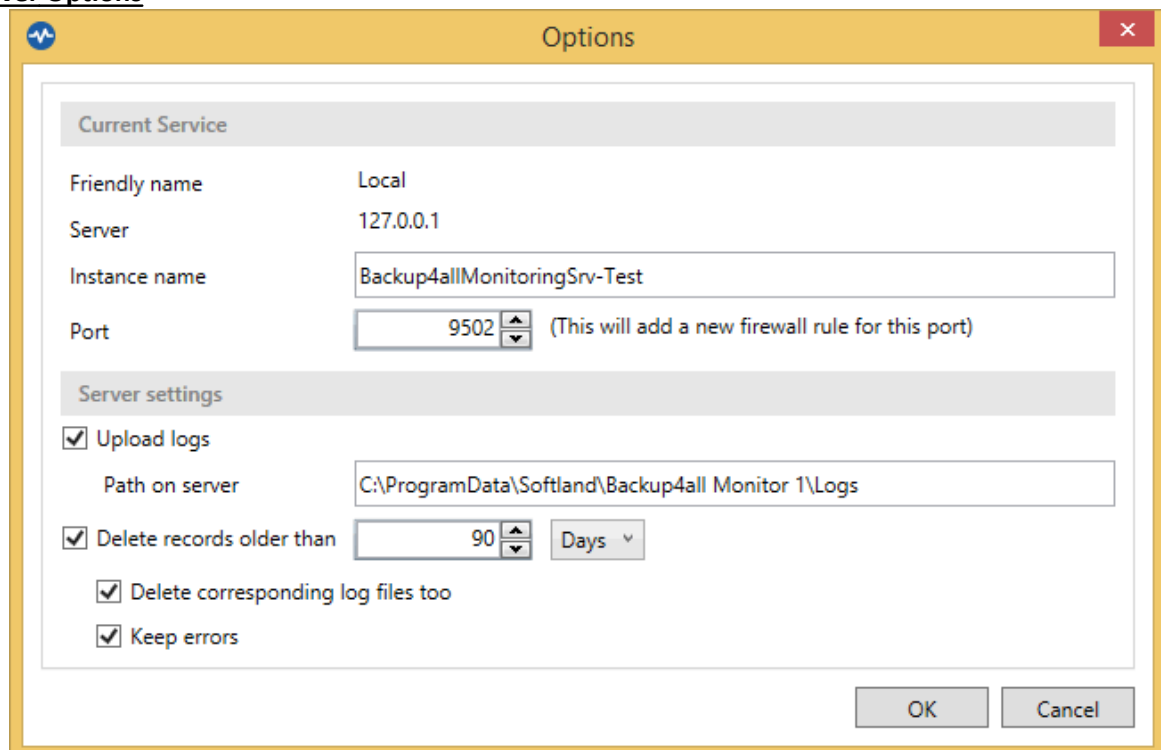
On the **Settings** tab of the Monitor Dashboard, under **Server settings** area, you can perform different configuration changes applying to the **Monitor Server** you are currently connected.

If the Dashboard Monitor is opened from the same computer where the Monitor Server is installed, all options will be shown.

If the Dashboard Monitor is opened from a different computer than the one with the Monitor Server, only the Options button will be shown.



Server Options



Current Service

Friendly name - shows the friendly name of the Server Monitor

Server - shows the IP of the Server Monitor

Instance name - you can view or edit the name of the instance for the current Server Monitor

Port - you can view or edit the Server Monitor port number

Server settings

Upload logs - if enabled, the log files will be uploaded to the specified path

Delete records older than - set how long to keep the history

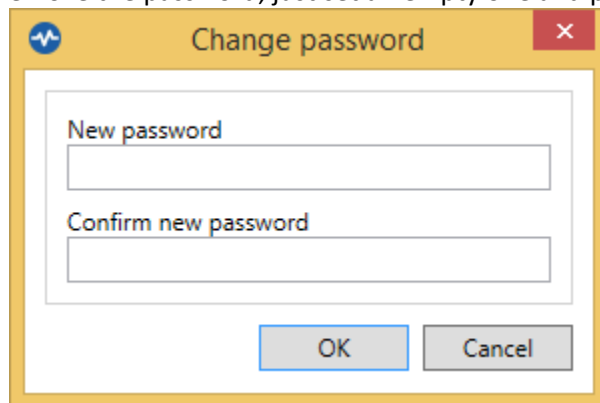
- Delete corresponding log files too - if selected, the uploaded log files will be deleted too

- Keep errors - if selected the errors will not be deleted

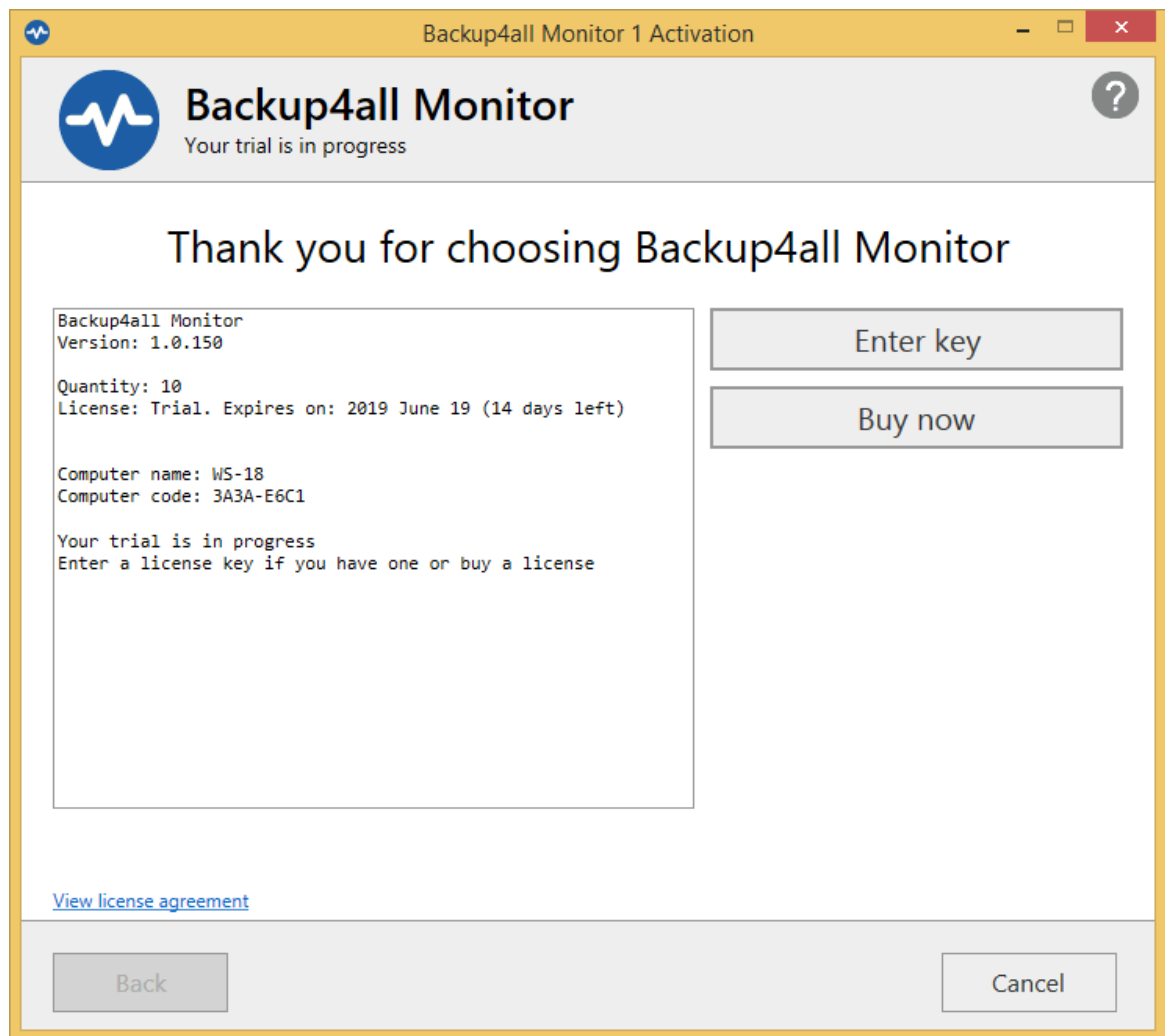
Password

Here you can set the password for the Monitor Server, when connecting from a remote Dashboard Monitor. The password will not be asked if you connect from a Dashboard Monitor installed on the same computer with the Server Monitor.

To remove the password, just set an empty one and press OK.

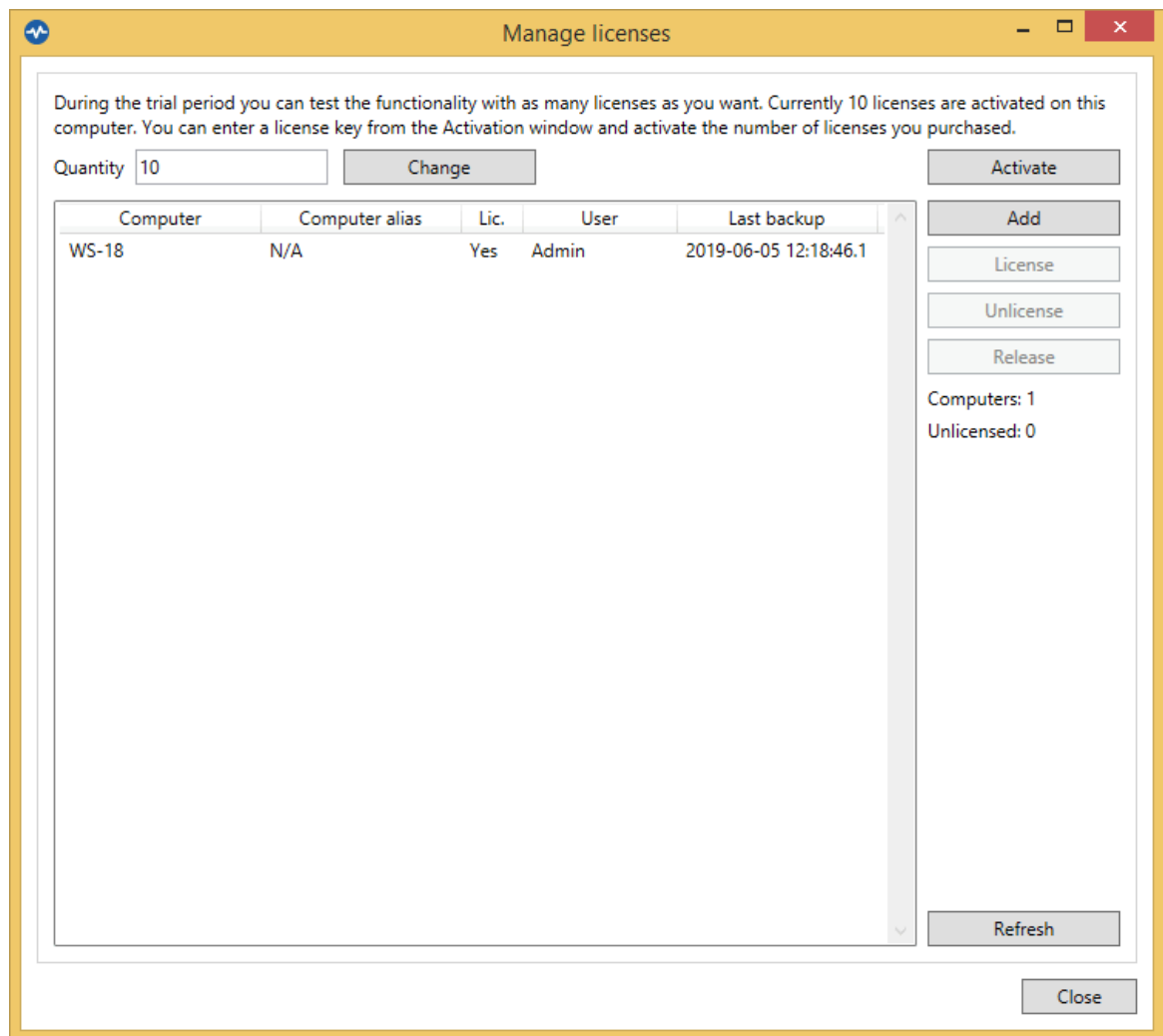
**Activate**

Displays the activation window



Manage licenses

On this page you can add licenses, activate, license/unlicense or release activations



Logging

Part



VI

6 Logging

By default, the backup logs are sent automatically to the Backup4all Monitor.
When you right click an entry in History, you have an option to open the log file.

Logs folder location

The log files are stored by default in the following folder on the computer where the Server Monitor is installed:

"C:\ProgramData\Softland\Backup4all Monitor 1\Logs"

To change the logs folder location, please go to Settings->Server Options->Path on server

The logs will be automatically deleted if older than the value you set (by default is 90 days).